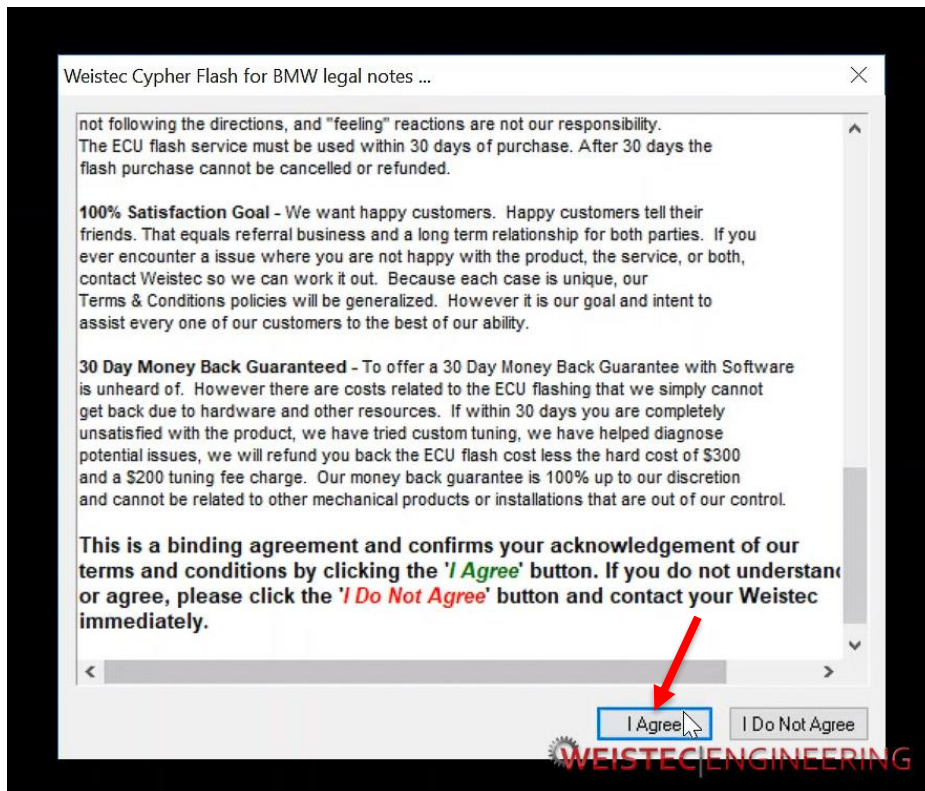


Weistec Cypher Flash Tool Instructions

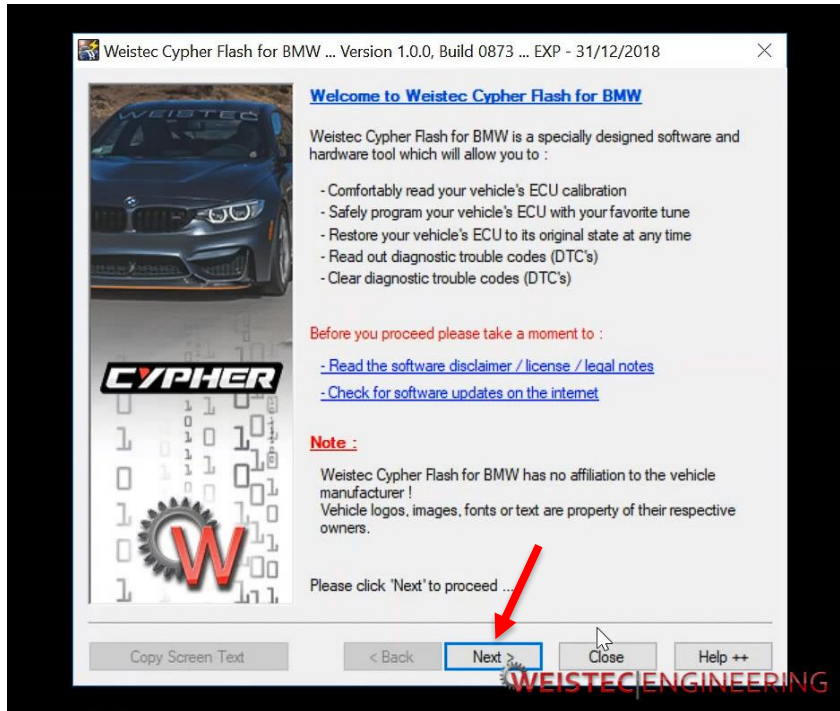


Order of Operations

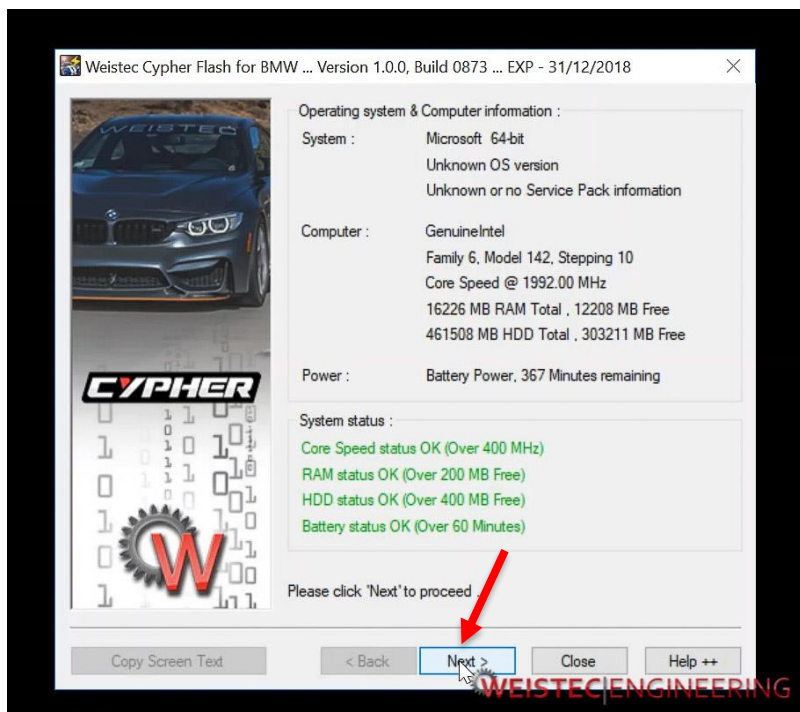
1. Connect Cypher to vehicle OBD2 port (vehicle should not be on)
2. Connect USB cable to Cypher
3. Connect USB cable to Laptop
4. Launch Cypher Program
5. Read disclaimer and click "I Agree"



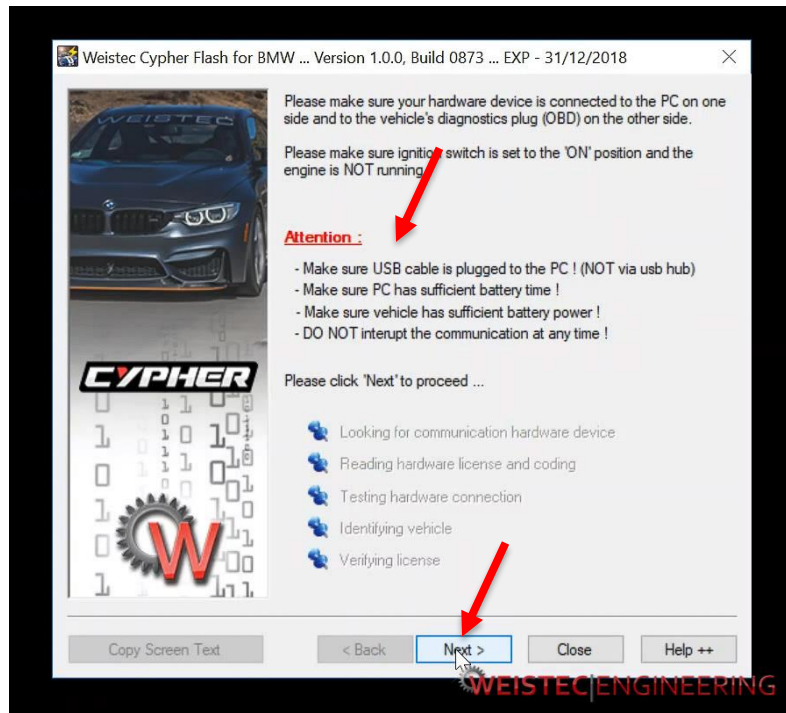
6. Click Next to proceed



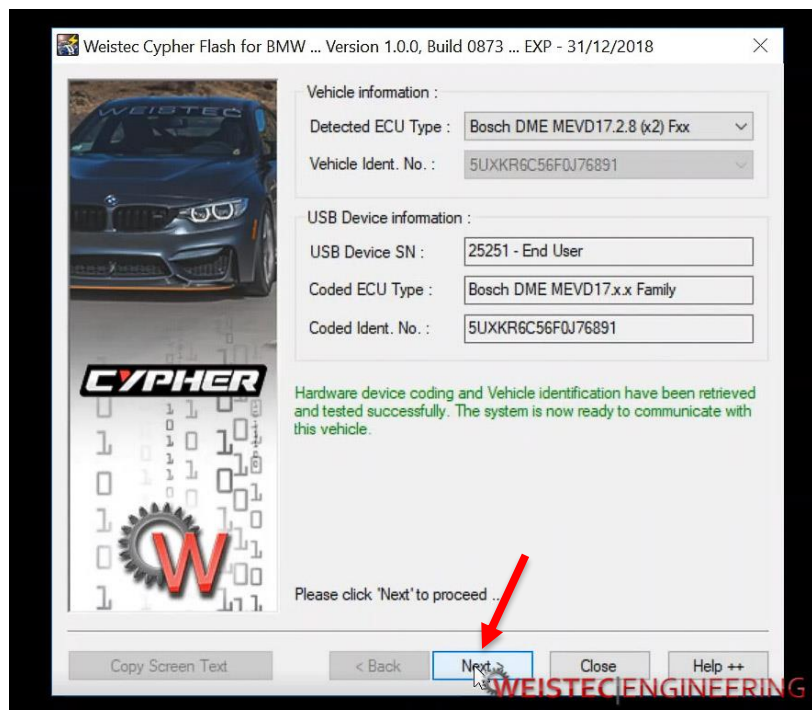
7. After Cypher software tests computer system status, click Next to proceed



8. Verify that all conditions listed under “**Attention**” are met, then click next to proceed



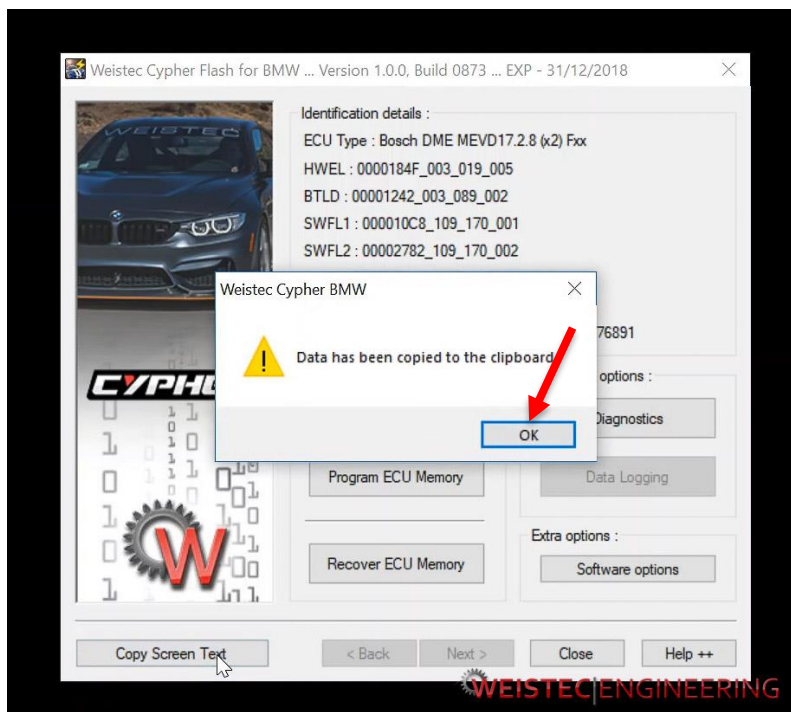
9. Wait for Cypher to identify the vehicle, then click Next to proceed



10. Click Copy Screen Text



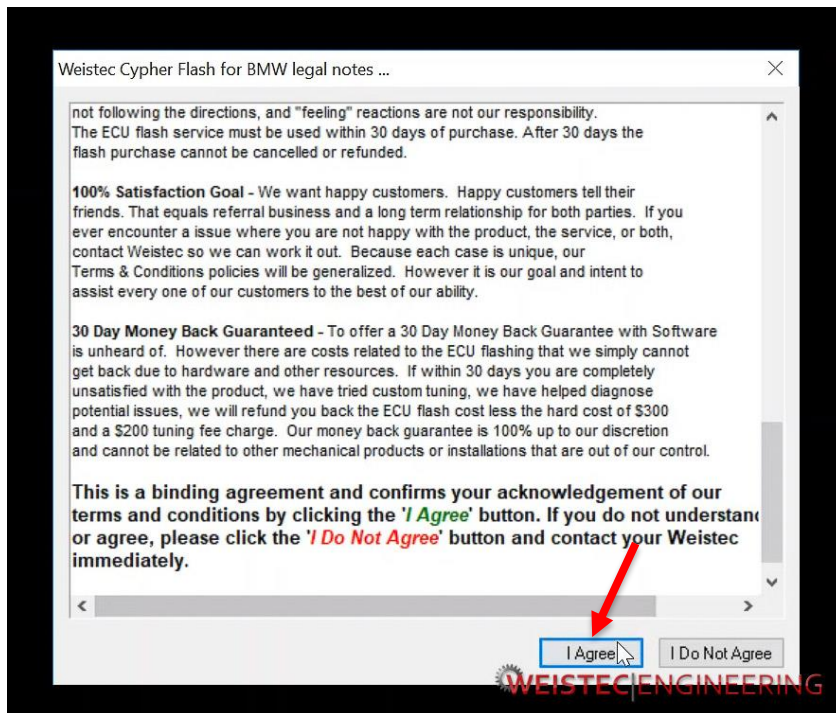
11. Click OK on the dialog that pops up



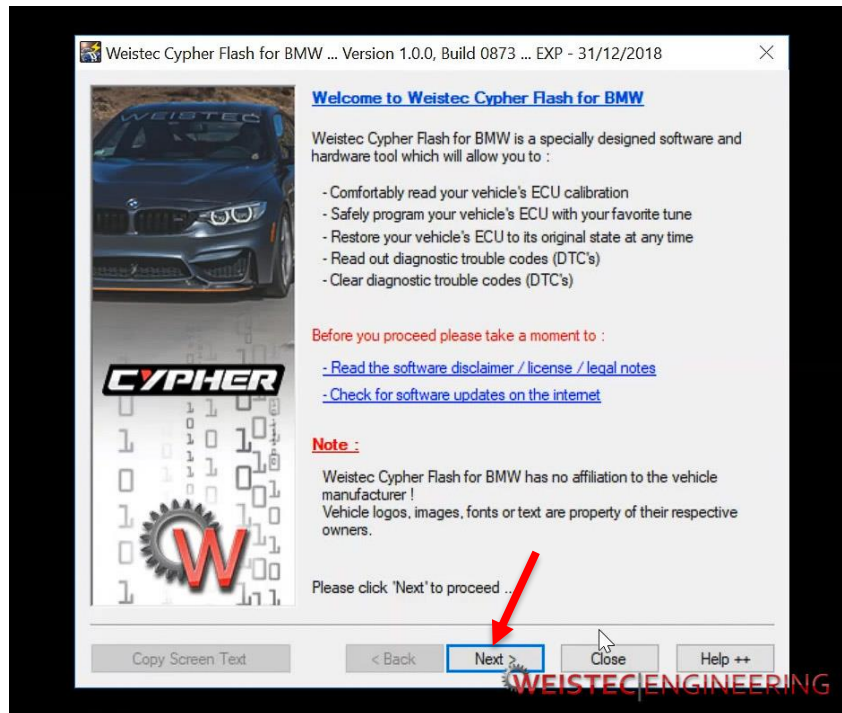
12. Open your email client. Paste the details into the email body and address the email to tuning@weistec.com Put your name in the email subject field and send the email.
13. Close the Cypher program and disconnect the Cypher tool from your vehicle and laptop

At this point, you must wait for Weistec to receive the information and prepare the tune file. This process usually takes one full business day. During this wait, avoid having any software updates performed on the vehicle as this could invalidate the information that was just provided to Weistec for preparing the tune file. You may drive the vehicle as normal.

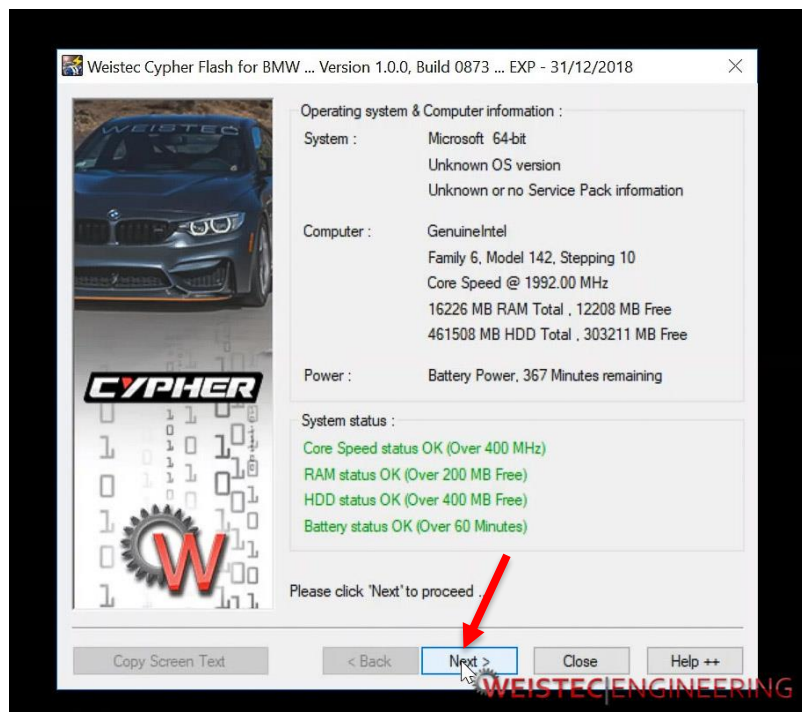
14. Once the tune file is received, once again connect Cypher to vehicle OBD2 port
15. Connect USB cable to Cypher
16. Connect USB cable to Laptop
17. Launch Cypher Program
18. Read disclaimer and click "I Agree"



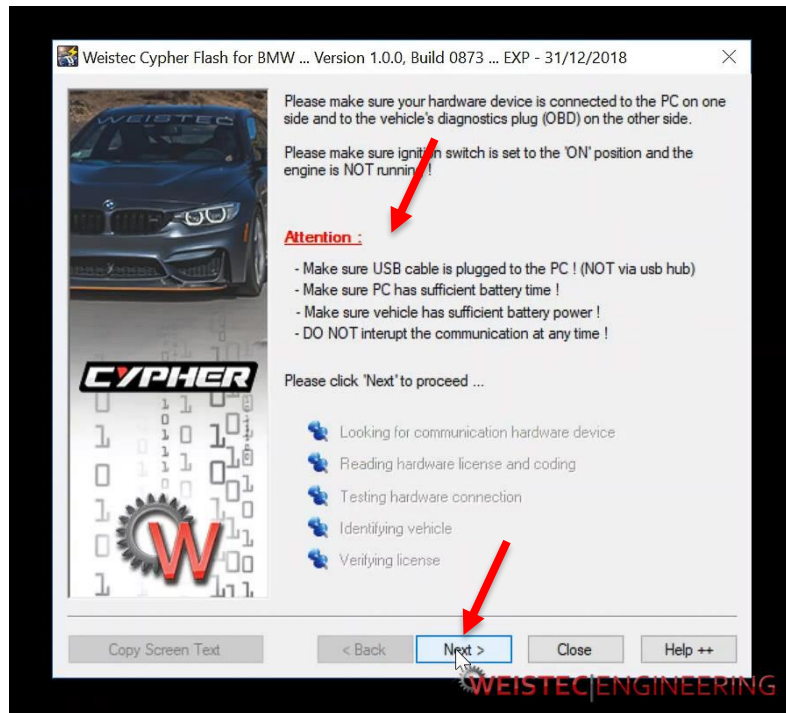
19. Click Next to proceed



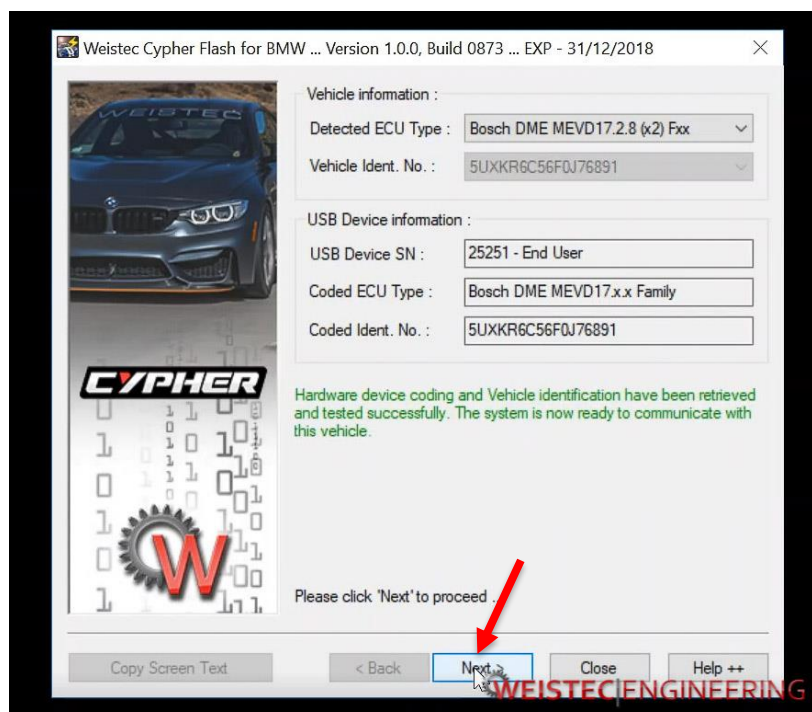
20. After Cypher software tests computer system status, click Next to proceed



21. Verify that all conditions listed under “**Attention**” are met, then click next to proceed



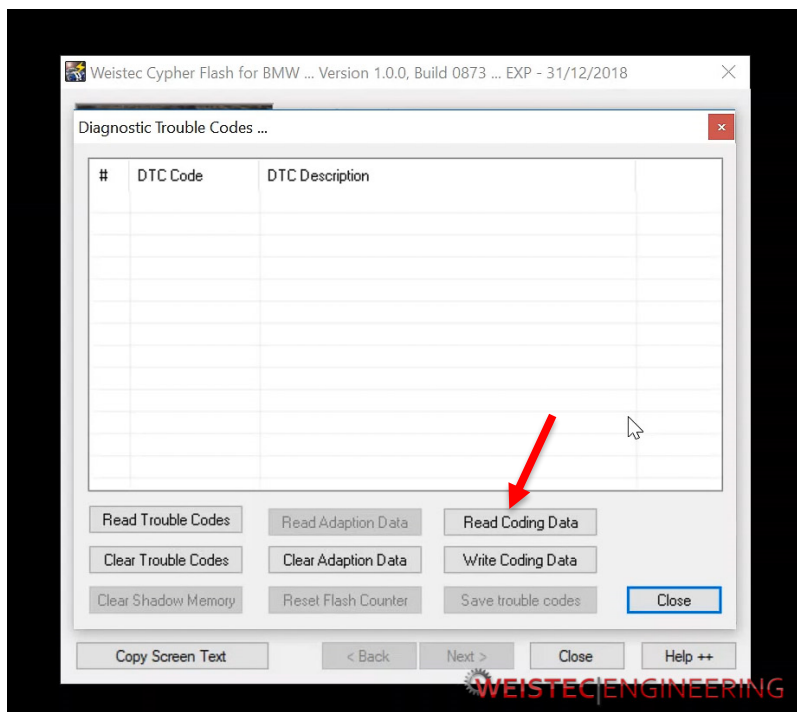
22. Wait for Cypher to identify the vehicle, then click Next to proceed



23. Click on Diagnostics

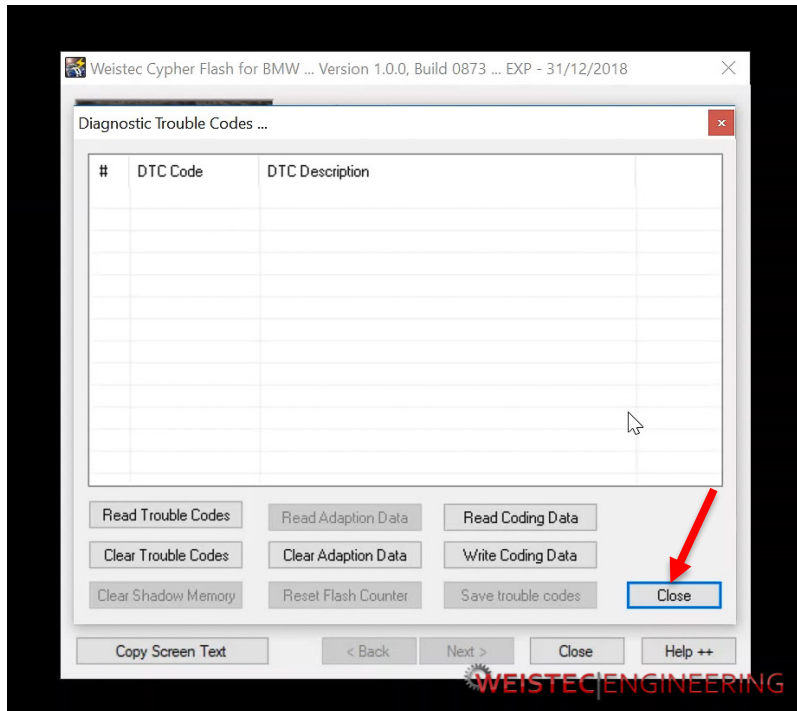


24. Click Read Coding Data



25. In the pop up window, Save the Coding Data as “Vehicle Coding Data”

26. Click “Close” to close the diagnostic window



27. Connect a battery charger to the vehicle

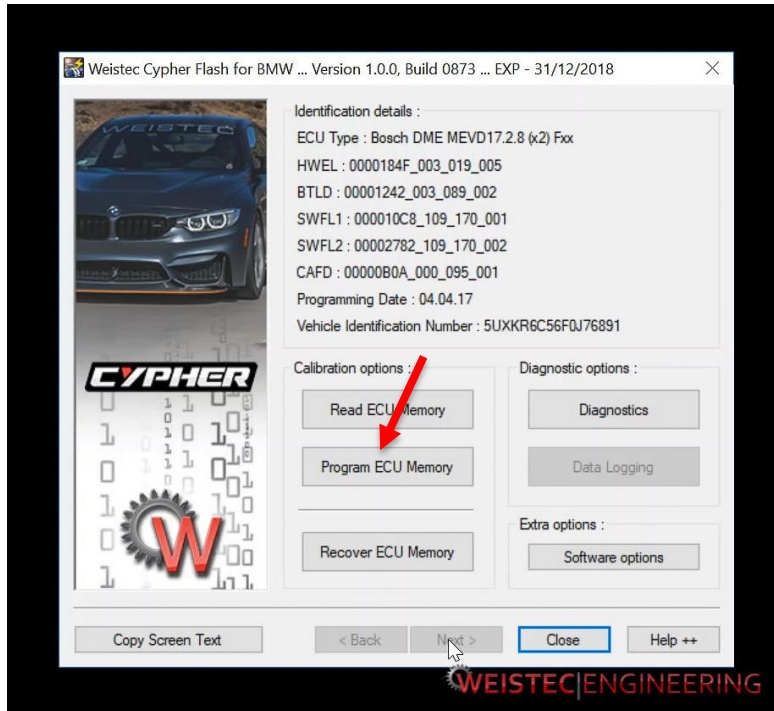
28. Turn vehicle ignition on(DO NOT START ENGINE)

29. Latch in driver’s seatbelt

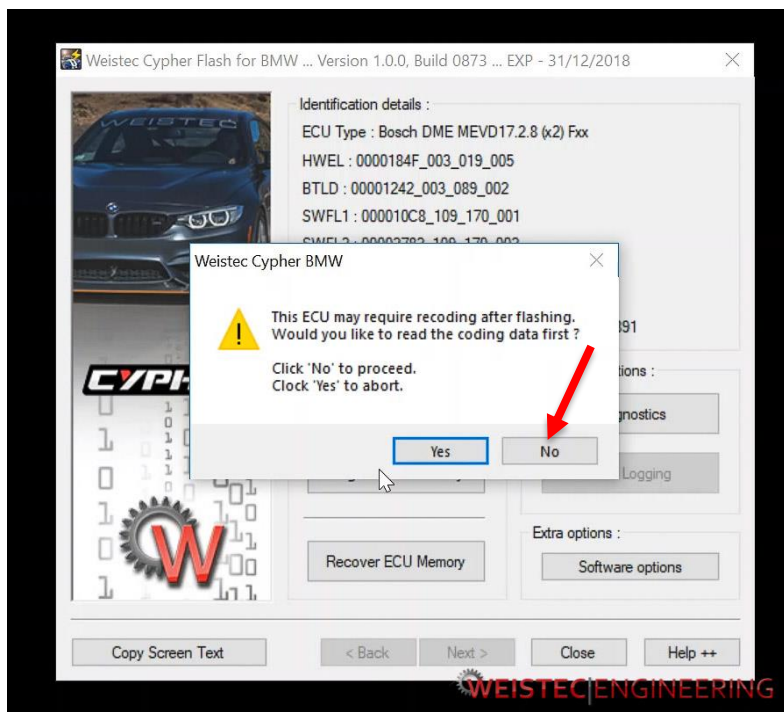
30. Make sure all vehicle doors are closed

31. Make sure all power draining accessories are turned off

32. Click Program ECU Memory

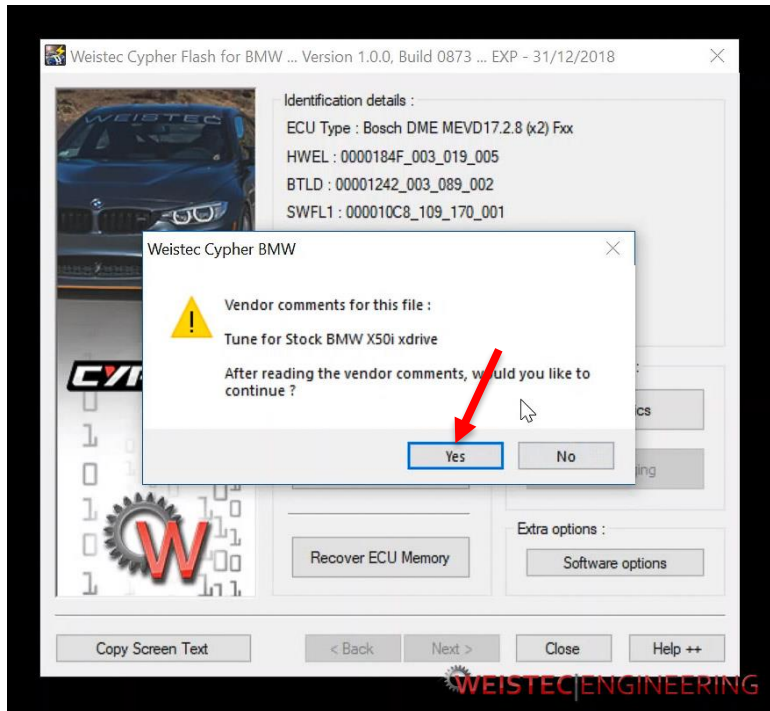


33. Click "No" as the Vehicle Coding Data has already been saved in step 25



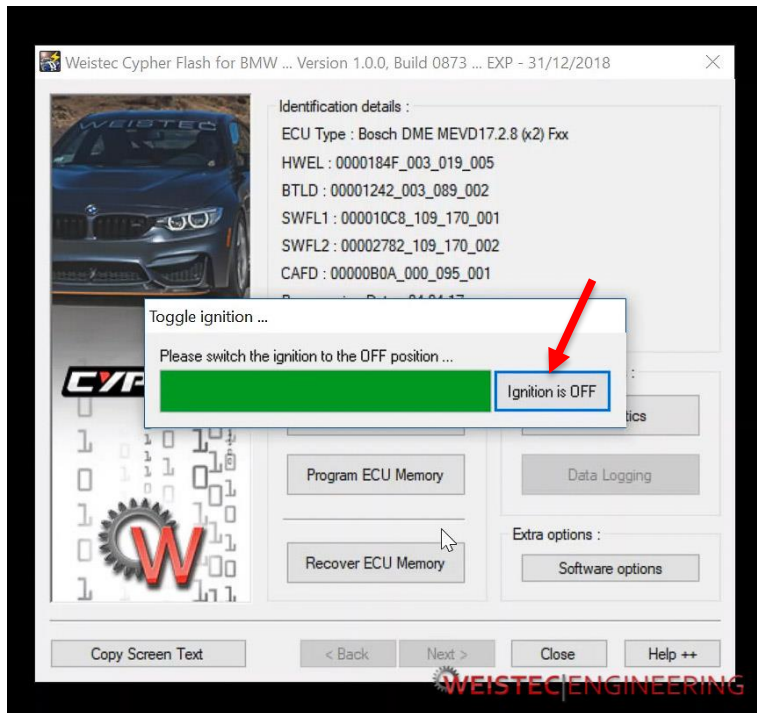
34. Select the tune file provided by Weistec

35. Click “Yes” to continue with the selected file after verifying the file comments



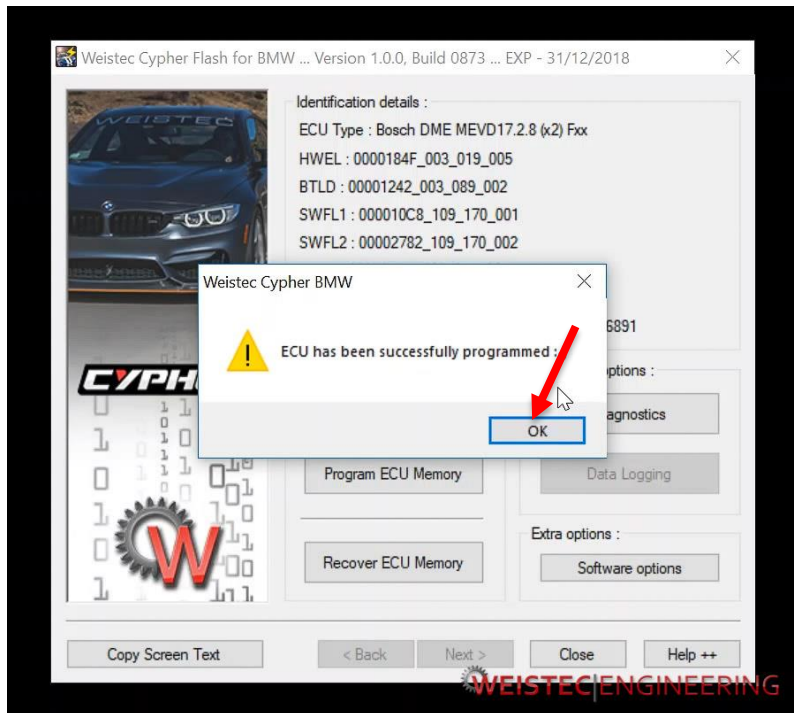
36. Wait for the software to flash the ECU until a window pops up telling you to switch off the ignition

37. Switch off the vehicle ignition and click "Ignition is OFF"

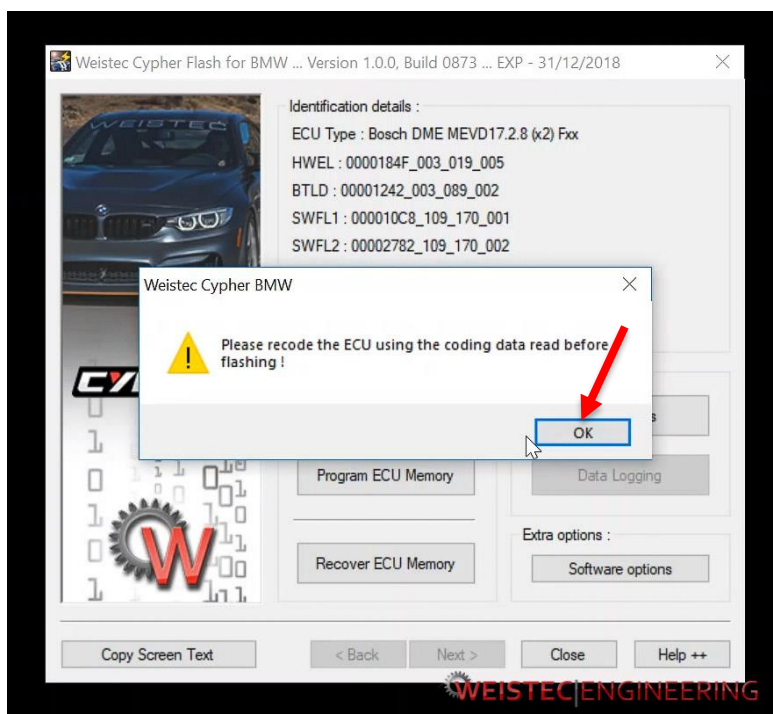


38. Wait for the green bar to shrink away

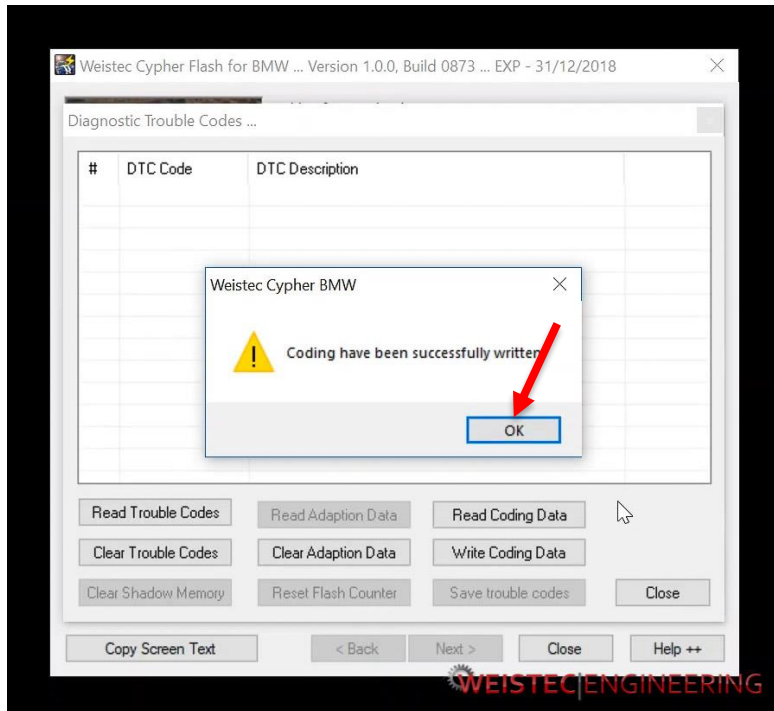
39. Click OK on the “ECU has been successfully programmed” notification



40. Click OK on the “Recode ECU” notification



- 43. Select the "Vehicle Coding Data" file
- 44. Click OK on the "successful coding" notification



- 45. Disconnect the Cypher tool from the vehicle
- 46. Disconnect battery charger
- 47. Start engine
- 48. Process is complete